

Departmental
Postdoc Committee
Chairs Network

Monday 24 October 2016

Agenda

- 12.00 Introductions *Tariq*
- 12.05 Postdoc needs status report *Tariq/Joy*
Priorities for 2016/17
- 12.25 15 point Development Framework
Matt, Hannah and Mary-Beth
- 13.00 Committee engagement *Pieter*
- 13.25 Update from PdOC *Joy/Tariq*
- 13.30 Updates from OPdA *Karina and Rob*
- 14.00 End of meeting

Purposes of the Network



Provide a representative **postdoc 'voice'**



Share best practice, ideas and experiences between departments

Provide face to face advice, support & training for **existing** departmental postdoc committees



Provide **guidance and support** for postdocs and departments in setting up **new** departmental postdoc committees

Prioritised Postdoc Needs

(Updated, May 2014)

Postdocs need opportunities / support / access to following:



Prioritised Postdoc Needs

(Updated, May 2016)

Postdocs need opportunities / support / access to following:



2016/17 Priorities



Researcher Development 8

People Management 6

- Induction 7
- SRD 11
- New concordat 14
- Relocation?

Research Funding 1

- Gaining independent funding 2
- RA-SRA (-PRA) 3
- Long term postdocs
- Relocation?

Research Funding

(needs 1,2,3)

- Ability to apply for independent funding
- Promotion RA-SRA-PRA
- Long term postdocs
- Relocation?

What are your main issues?

What do you want to know more about?

What questions would you like to ask?

Agenda

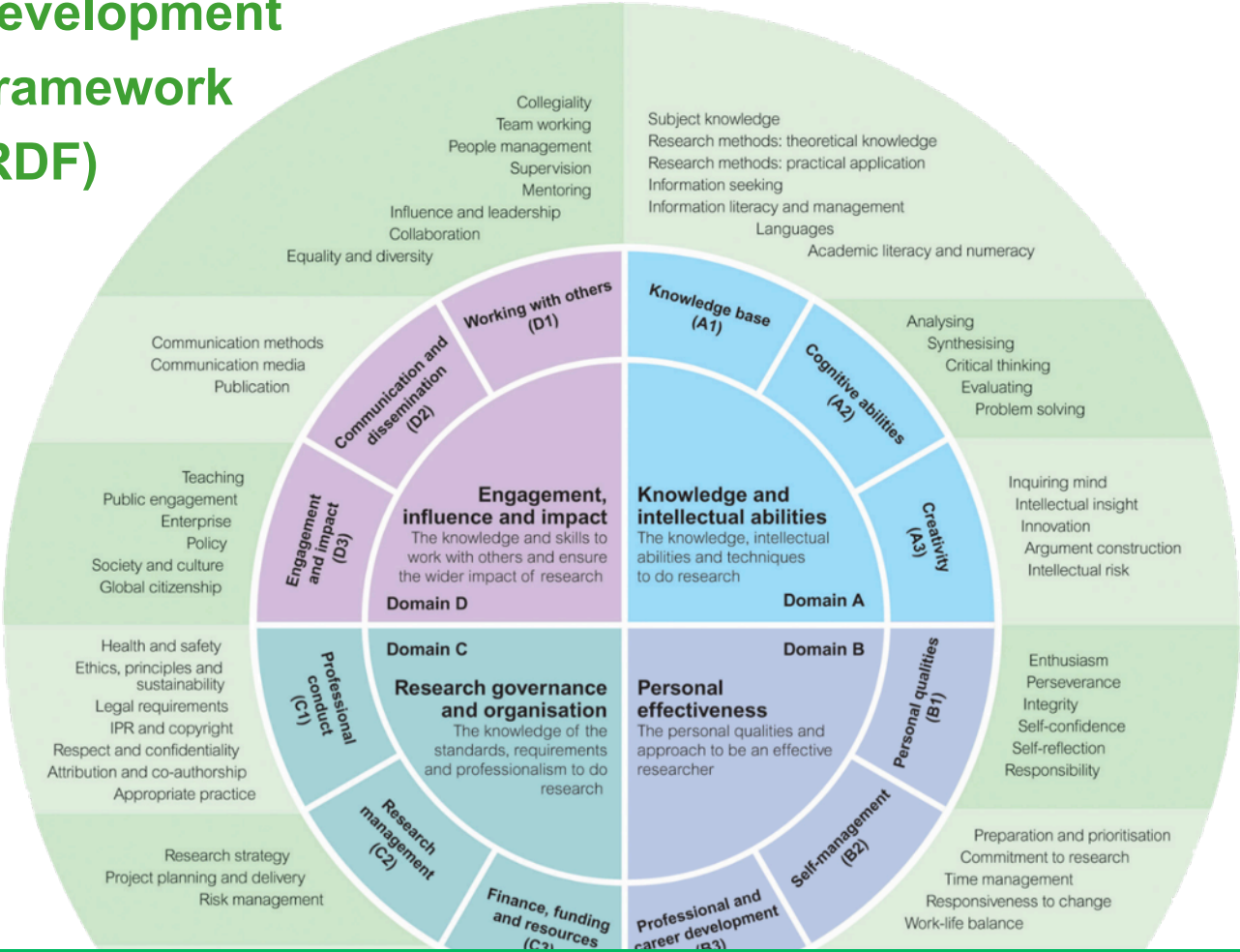
- 12.00 Introductions *Tariq*
- 12.05 Postdoc needs status report *Tariq/Joy*
Priorities for 2016/17
- 12.25 15 point Development Framework
Matt, Hannah and Mary-Beth
- 13.00 Committee engagement *Pieter*
- 13.25 Update from PdOC *Joy/Tariq*
- 13.30 Updates from OPdA *Karina and Rob*
- 14.00 End of meeting

15 point Development Framework



**Researcher
Development
Programme**

Vitae Researcher Development Framework (RDF)



Describes the knowledge, behaviours and attributes of successful researchers

Use it to assess your strengths and identify areas for further development

Cambridge trial for Postdocs and PhD students from Sept 2016.

Melissa.Koops@admin.acm.ac.uk

Agenda

- 12.00 Introductions *Tariq*
- 12.05 Postdoc needs status report *Tariq/Joy*
Priorities for 2016/17
- 12.25 15 point Development Framework
Matt, Hannah and Mary-Beth
- 13.00 Committee engagement *Pieter*
- 13.25 Update from PdOC *Joy/Tariq*
- 13.30 Updates from OPdA *Karina and Rob*
- 14.00 End of meeting

Themes for 2016/17



**“I suppose I’ll be the one
to mention the elephant in the room.”**

Supporting your committee

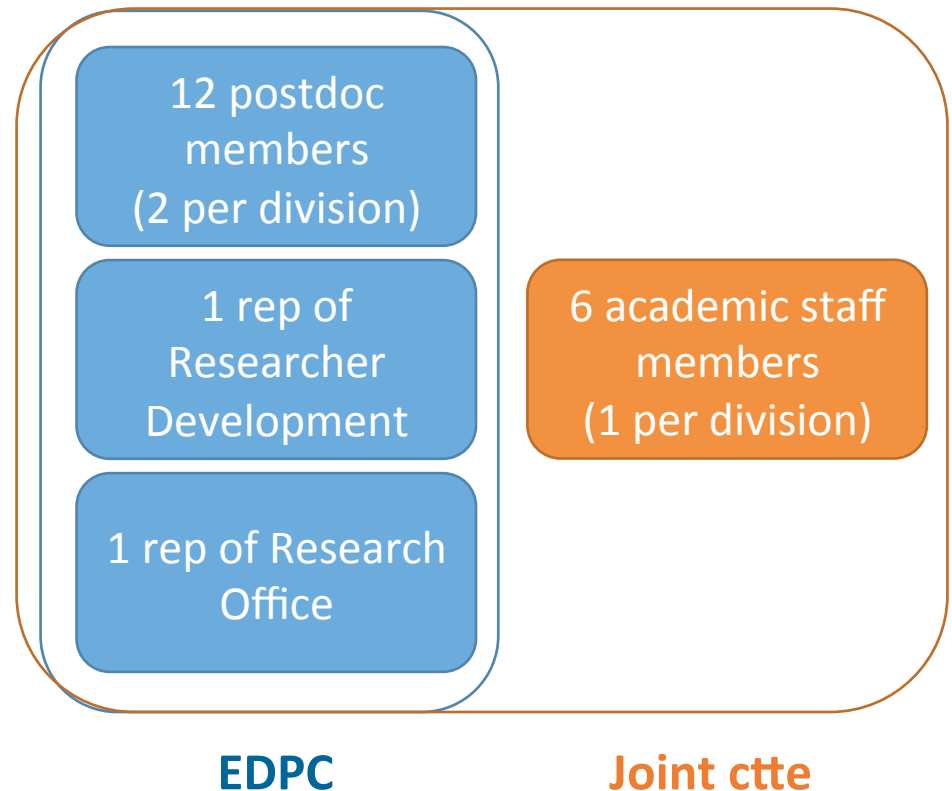
- Sustainability and postdoc engagement
- Integration into department
- Funding, event ideas



Postdoc committee member recruitment and postdoc engagement

Pieter Desnerck

- Committee found in 2013
- ~275 postdocs
- Representative in:
 - Faculty Board
 - Athena Swan SAT
 - Move West Forum
 - DPCCN
 - EPC



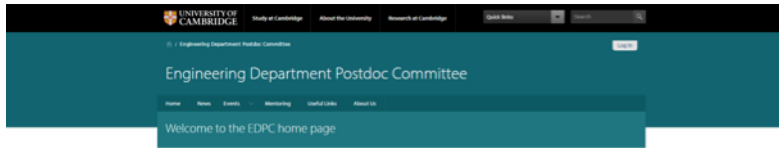
- Organisation:
 - Chair
 - Vice-Chair
 - Secretary
 - Communication officer
 - Mentoring officer
 - Events officer
 - + supporting members
- Roles are assigned at the start of the academic year for 1 year
 - Changes during academic year
 - Changes after academic year

- Recruitment:
 - Leaving member suggestions
 - Remaining divisional member suggestions
 - Email from EDPC
 - Email from Research office
 - Email from Head of division
- When:
 - September/October
 - Unless sudden drop-out

Keep eyes and ears open for enthusiastic colleagues!



Engineering Department Postdoc Committee



Engineering Department Postdoc Committee

Welcome to the Engineering Department Postdoc Committee's home page. The EDPC is a group of volunteers who represent the interests of postdoctoral researchers in the Department of Engineering. We list our most recent news and events on this page. See our about us page. Here you will find the latest news, events and useful links related to the lives of postdocs in the Engineering Department.



Engineering Department Postdoc Committee

Newsletter Vol. 1 No. 2
October 2015

Hi there engineering post-docs,

Time for our second edpc newsletter.

We have a very interesting talk coming up this month. Probably you have heard part of the buzz about the West Cambridge Move of our Engineering Department. Want to get the latest and most accurate news? Join us for Philip Guildfords' talk on the subject, see details below.



Engineering department postdoc committee



@EDPC_Cambridge



edpc-enquiries@eng.cam.ac.uk

Most effective (most time consuming): word of mouth!

- About the needs of your committee.
 1. How do you plan for sustainability of your ctte?
(What happens when a ctte member leaves Cambridge or would like to step down).
 2. How and when do you recruit new committee members?
 3. How do you share the workload?

- About wider engagement with postdocs in your department
 1. How do you encourage postdocs to attend meetings/events?
 2. How do you communicate with your postdocs?

Agenda

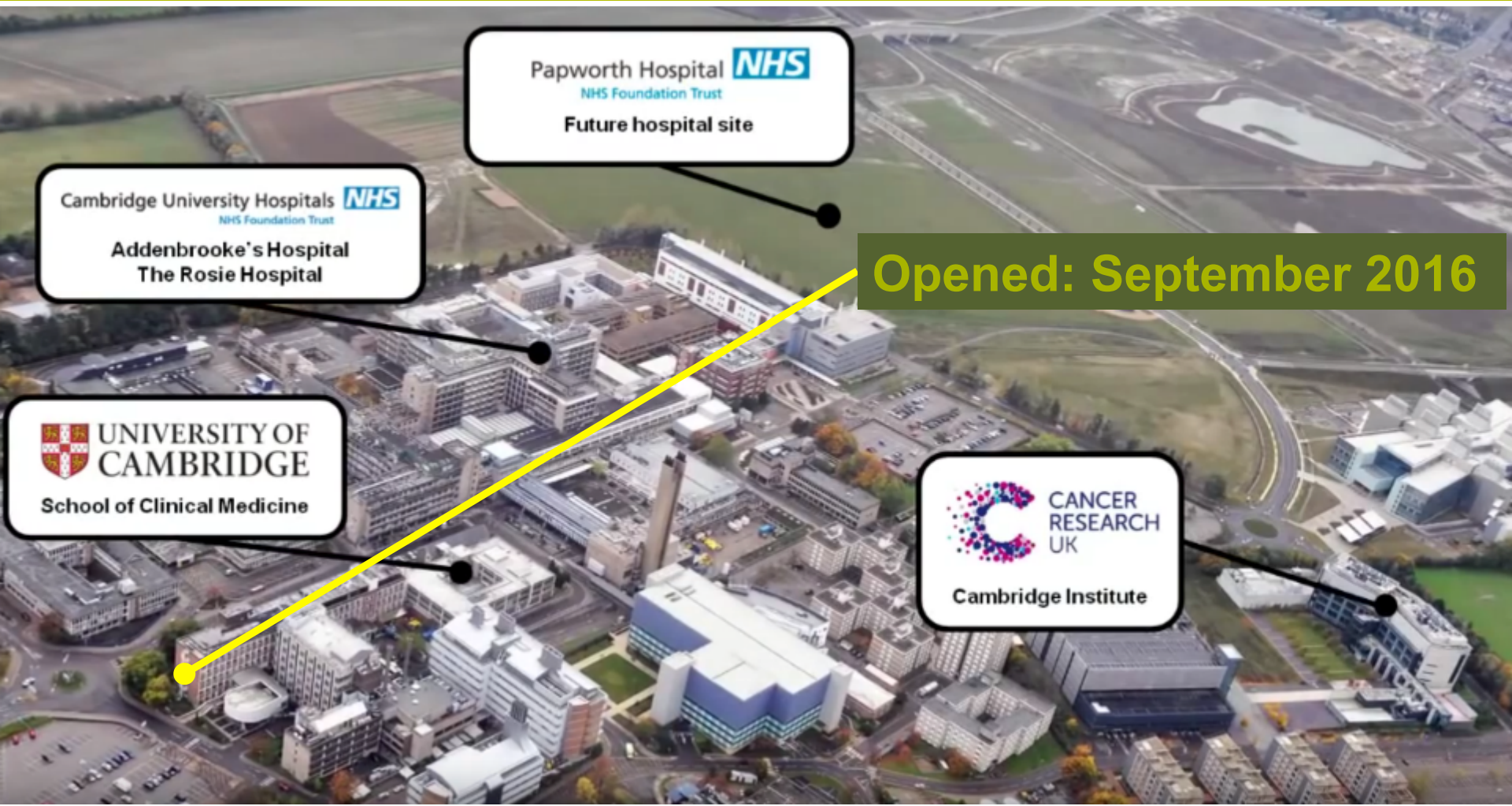
- 12.00 Introductions *Tariq*
- 12.05 Postdoc needs status report *Tariq/Joy*
Priorities for 2016/17
- 12.25 15 point Development Framework
Matt, Hannah and Mary-Beth
- 13.00 Committee engagement *Pieter*
- 13.25 Update from PdOC *Joy/Tariq*
- 13.30 Updates from OPdA *Karina and Rob*
- 14.00 End of meeting

Updates from PdOC / AOB

- PdOC after work: Pensions
14 November 18.00-20.00
- PdOC Masterclass “How to accomplish more by stressing less” 22 November 9.30-12.30

- **Postdoc centres - Biomedical Campus (opened) and NWC (planning)**
- **Communications - Jenny Harwood**
- **Update on Heads of Schools meetings (AH and AHSS)**
- **Researcher Development funding of current pilot of Vitae's "planner"**
- **Researchers14 – meeting with Research Councils (and Wellcome project)**
- **Mentoring – second round and potential for national scheme (Researchers14)**
- **College affiliation - meeting of College coordinators**
 - **entrepreneurial network meeting**
 - **data harvest of JRFs and CRAs (greater numbers)**
- **HEAPP European project (funded by partners and Isaac Newton Trust grant)**

The Postdoc Centre @ Biomedical Campus



Papworth Hospital 
NHS Foundation Trust
Future hospital site

Cambridge University Hospitals 
NHS Foundation Trust
Addenbrooke's Hospital
The Rosie Hospital

Opened: September 2016

 UNIVERSITY OF CAMBRIDGE
School of Clinical Medicine

 CANCER RESEARCH UK
Cambridge Institute

NORTH WEST cambridge

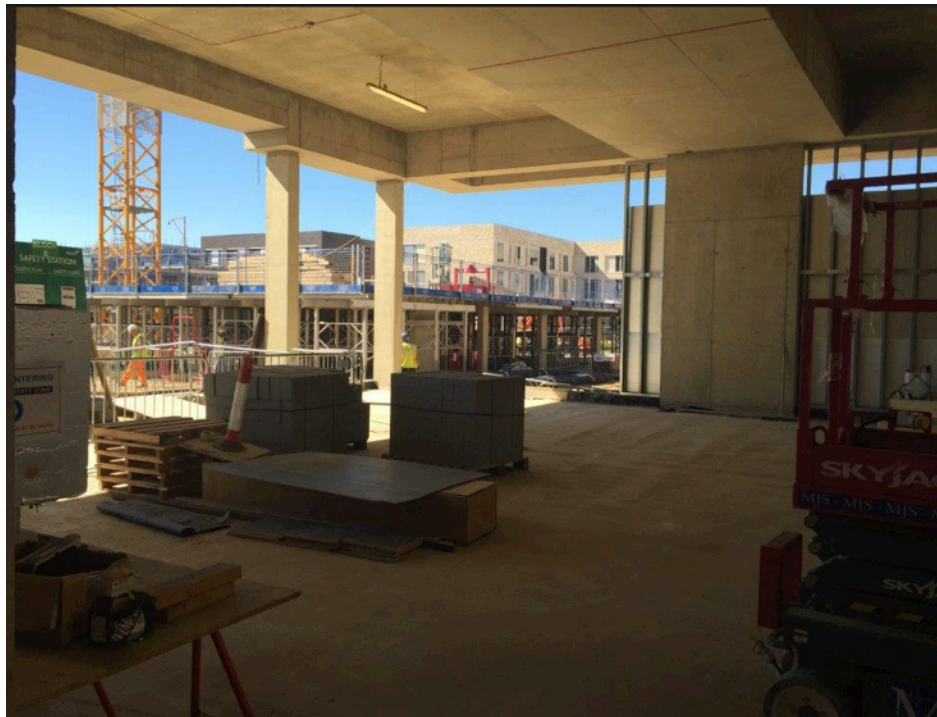


Phase 1 (2016)

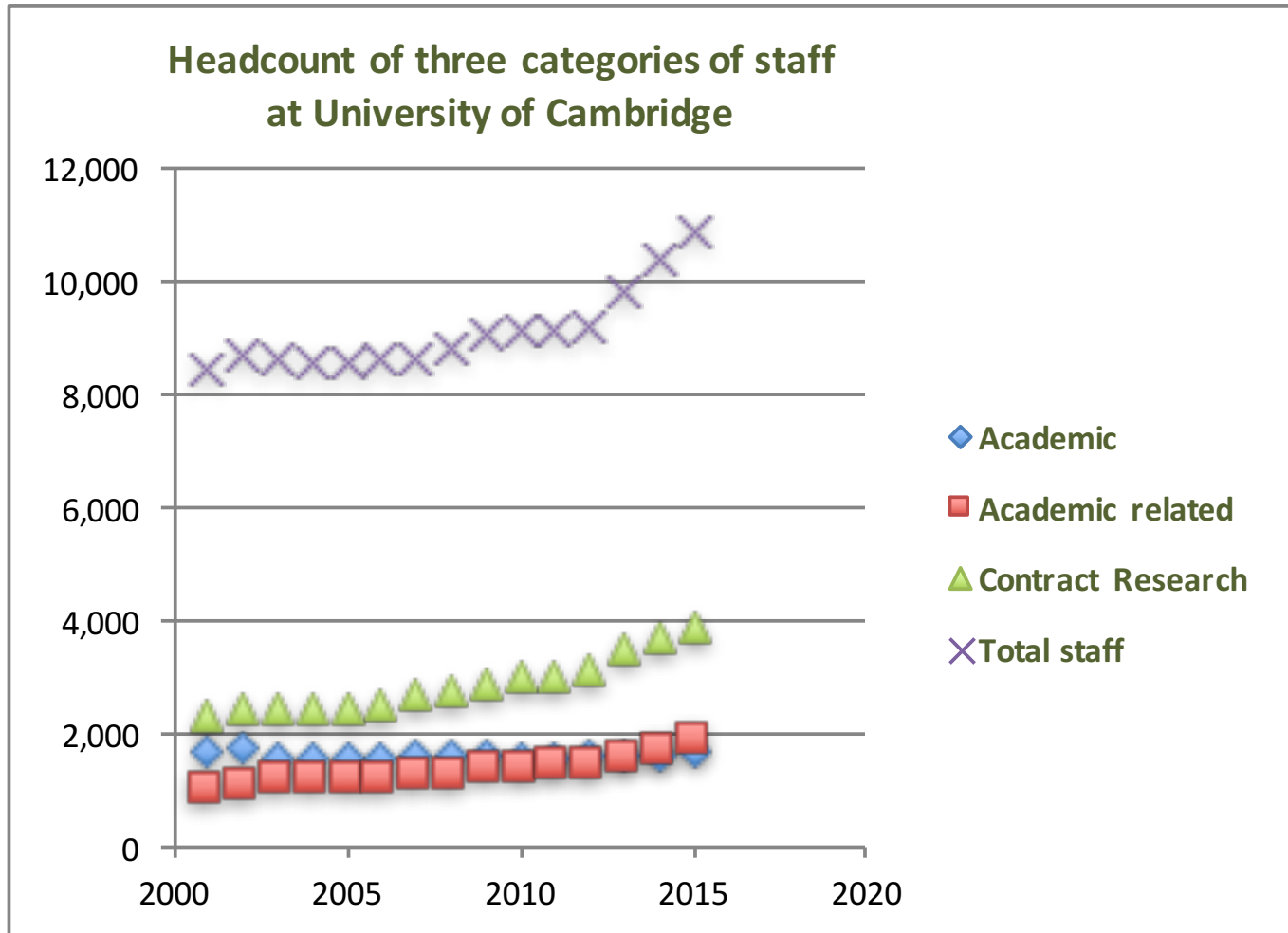
**700+ units for key worker housing
(mostly research staff);**

- Supermarket, shops, café, health centre, primary school, nursery, community centre.
- Sustainable buildings and landscape by outstanding architects.
- Priority for walking, cycling and bus access to City.

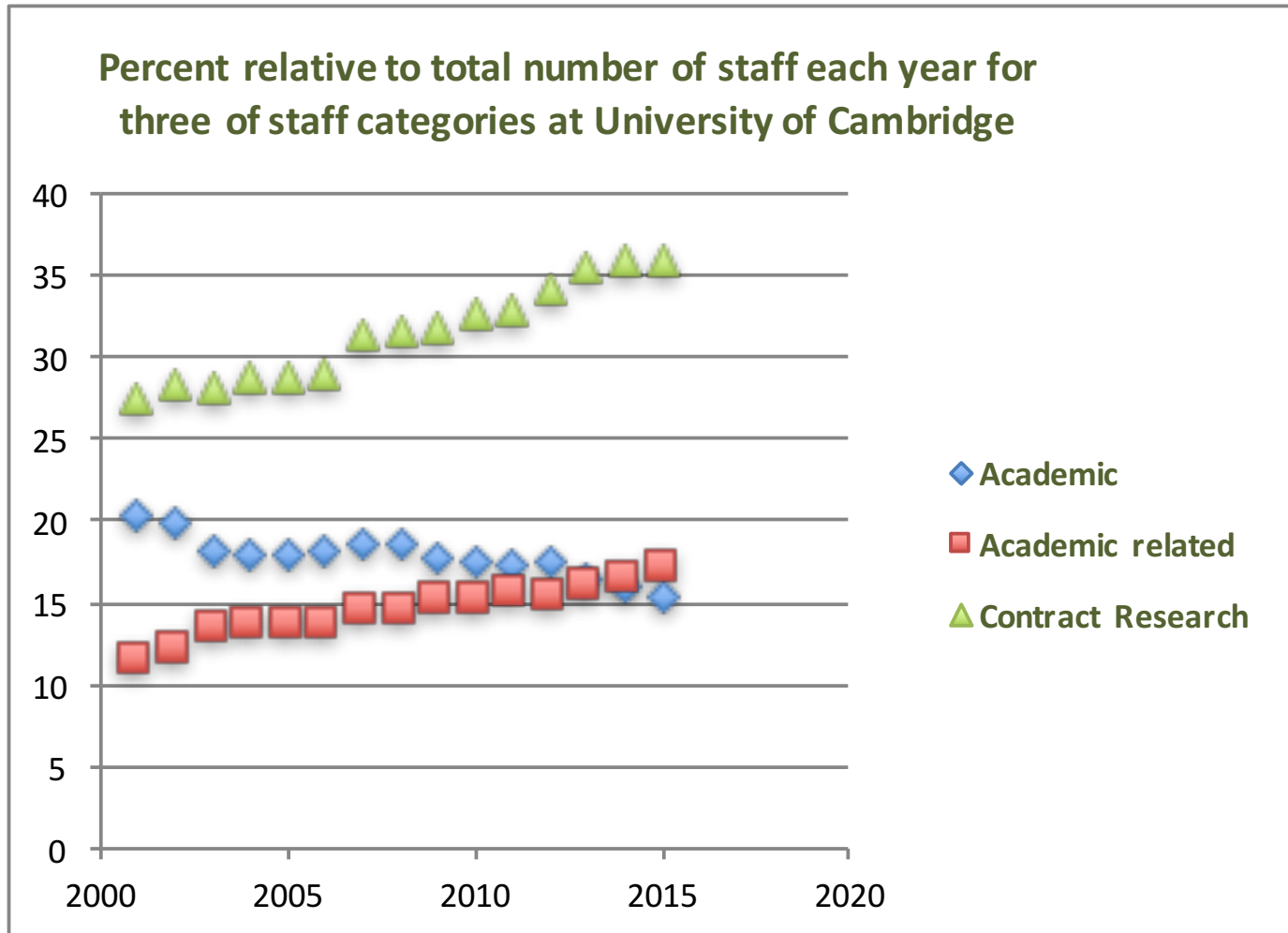
NWC development: The Postdoc Centre @ NWC



Cambridge's people: total staff by category



Cambridge's people: proportions each year



AOB

- Researcher Development Committee – rep from Arts, Humanities, Social Sciences

Next Meeting

Thursday 23 February 6-8pm

Visiting speakers:

Chris Abell PVC Research

Peter Hedges Head of Research Office